

# CREATE YOUR OWN LEAF MASK

Whilst on your trail today, gather up fallen leaves and get creative in making your very own leaf mask!



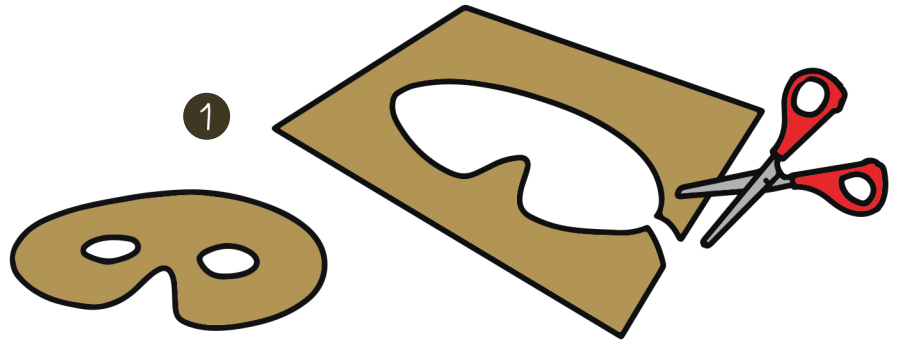
CHILDREN'S  
**NATURE  
WATCH**

BRITISH IRONWORK CENTRE & SCULPTURE PARK

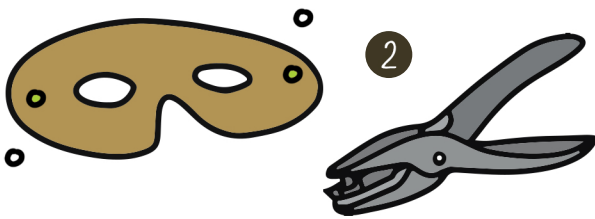
## What you will need:

- Scissors
- Leaves
- Card
- Hole punch
- Paintbrush
- String (Wool or Ribbon)
- Glue

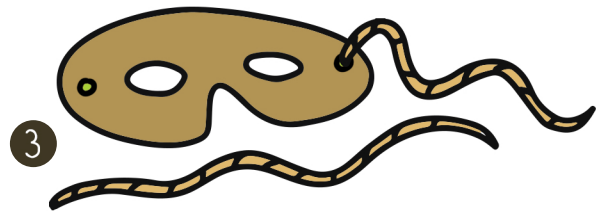
Ask a grown-up for some help!



1 Cut the card into a mask shape and cut out eye holes.



2 Using the hole punch, make two holes on either side of the mask.



3 Measure out two lengths of string that are long enough to tie around your head. Pop them through the holes and tie them in place.



4 Cut the stems off the leaves and use the paintbrush to cover them in glue. You can also use some bird feathers that you have collected from the ground.



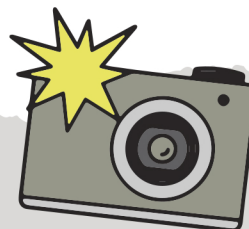
5 Stick each leaf to your mask. Remember – don't stick the leaves over the eye holes!

## SHOW US YOUR CREATIONS:

[www.britishironworkcentre.co.uk](http://www.britishironworkcentre.co.uk) | TheBritishIronworkCentre

For personal and educational use. Don't forget there are loads more trails and activities to download on our website.

© Created by the British Ironwork Centre & Sculpture Park



BRITISH



IRONWORK CENTRE  
& SCULPTURE PARK