

KNOW YOUR LADYBIRDS

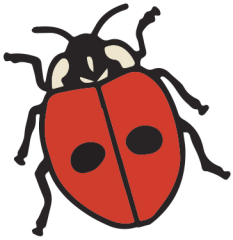
There are 26 types of ladybird in the UK, many of which can be spotted in gardens and woodland. We have listed the most common below.



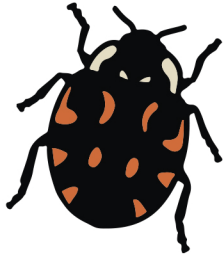
CHILDREN'S
**NATURE
WATCH**

BRITISH IRONWORK CENTRE & SCULPTURE PARK

Can you spot any of these ladybirds whilst on our trail?



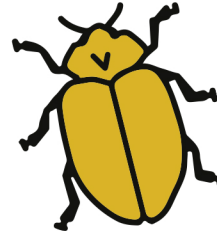
2 Spot Ladybird
Adalia 2-punctata
Widespread & common in many habitats



10 Spot Ladybird
Adalia 10-punctata
Widespread & common, Lives on deciduous trees



Cream-Spot
Calvia 14-guttata
Widespread & common, Lives on deciduous trees



Larch Ladybird
Aphidecta oblitterata
Widespread & common, Lives on conifers, larch & firs



Cream-streaked
Aphidecta oblitterata
Widespread & common, Lives on conifers



Pine Ladybird
Exochomus 4-pustulatus
Found on conifers & deciduous trees



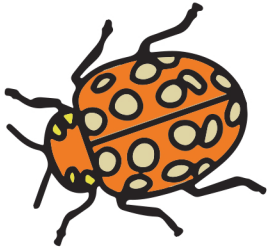
7 Spot Ladybird
Coccinella 7-punctata
Widespread & common in many habitats



Harlequin Ladybird
Harmonia axyridis
Can be either Red or Black with differing numbers of spots possible. Look for their brown legs to identify them.



Eyed Ladybird
Anatis ocellata
Largest breed in UK. Widespread, lives on conifers



Orange Ladybird
Halyzia 16-guttata
Widespread & common, Lives on deciduous trees



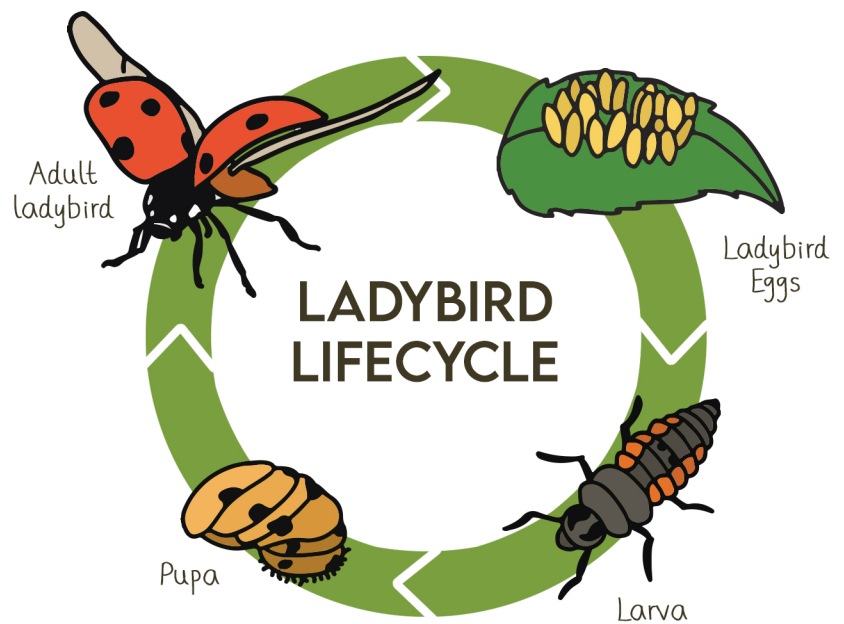
14 Spot Ladybird
Propylea 14-punctata
Widespread & common



22 Spot Ladybird
Thea 22-punctata
Common, mildew-feeder on herbaceous plants



24 Spot Ladybird
Subcoccinella 24-punctata
Widespread & common, hairy grassland species



HOW MANY DID YOU FIND?

For personal and educational use. Don't forget there are loads more trails and activities to download on our website.

www.britishironworkcentre.co.uk | [TheBritishIronworkCentre](https://www.facebook.com/TheBritishIronworkCentre)

© Created by the British Ironwork Centre & Sculpture Park

BRITISH



IRONWORK CENTRE
& SCULPTURE PARK